

# SensDesk

Portal solution for monitoring and control of remote devices (ASP-oriented M2M)

SensDesk is an Internet service where you can connect your sensors, monitoring devices, and controlled outputs. From a single interface, you can manage all of your devices, monitor the status on a map, compare trends of variables in time, and process alarm alerts.

*SensDesk is a way to implement a functioning and reliable monitoring of your technology within a few hours. No complicated installation or additional servers are necessary.*

Online outsourcing of monitoring services is an easy and cost-effective way of providing these services to all customers that need them.

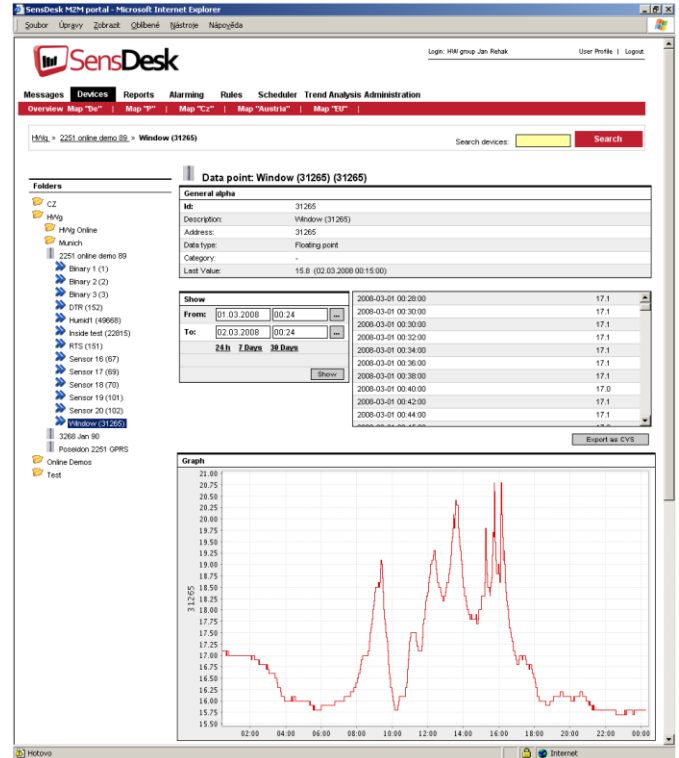
- Support for Ethernet-based Poseidon products (including the log of the 2251 model)
- Support for the TG11 GSM/GPRS product
- Concise WEB interface (HTTPS)
- Alarm alerts, alarms processed by the monitoring center
  - Alarms can be conditionally forwarded to e-mail or SMS
- Trend analysis, conditional reports, periodic reports by e-mail

## Application examples

- **IT – Monitoring of operating conditions:**  
Temperature monitoring in 19" racks and server rooms  
Monitoring of UPS status, humidity, power, access to the room
- **Food industry:** Monitoring of storage conditions (temperature, humidity, etc.) within a certification system (HACCP)
- **Pharmaceutical industry:** Monitoring of pharmaceuticals storage

## Intended SensDesk customers

- **Large enterprises:** Optimization of HVAC costs and storage conditions across all sites
- **Medium enterprises:** Cost-effective monitoring, independent of the internal IT department
- **Small businesses:** Easy-to-implement monitoring solution, includes all needed reports



**SensDesk supports**

- ✓ Web interface
- ✓ Various HW devices
- ✓ Map interface
- ✓ Trend analysis

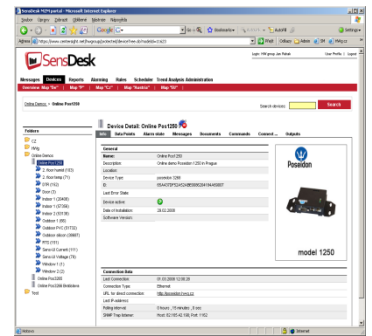
**Response to alarm:**

- ✓ Send an e-mail
- ✓ Send a text message
- ✓ Switch a relay over IP
- ✓ Defined process in the monitoring center

## Basic features

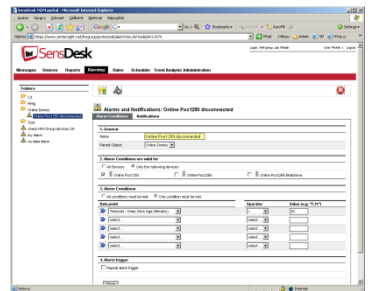
### Acquisition of data point values

- Support for Poseidon (Ethernet) and TG11 (GSM) products
- Current readings retrieved every 15 minutes
- Device logs with readings retrieved every 2 hours
- Response to a local alarm within 15 seconds
- Data can be exported to CVS (MS Excel)



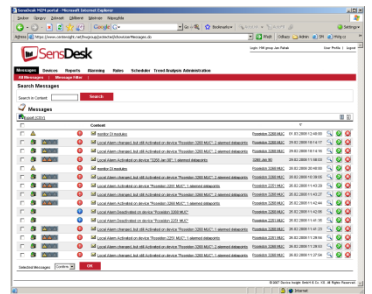
### Alarm processing

- System of alarm conditions (up to 5 conditions per alarm)
- Binding of conditions to a "local alarm" state
- Alert to a sensor reading out of range
- Alert to a sensor or device disconnection / failure
- Alerts can be redirected to e-mail or SMS for defined users
- Alerts can be filtered by day of week and by the time sent



### Message administration (Service Desk)

- Centralized, prioritized reception of warning/error messages
- Message analysis and processing is tied to the logged-in user
- Can be used as a 24/7 monitoring center



### Graphic analysis of data

- Data point values can be plotted for any desired period
- Multiple values can be combined to a single graph
- Graphs can be printed or saved as images
- Multilevel maps with device status indication



### Control of outputs

- Outputs of all devices can be controlled from a single place
- Outputs can be controlled automatically according to specified conditions

### Periodic reports

- Customizable report format (graph of data point values vs. time)
- Stored report templates can be periodically e-mailed as attachments
- Authorized reports can be sent as locked and signed PDF files

